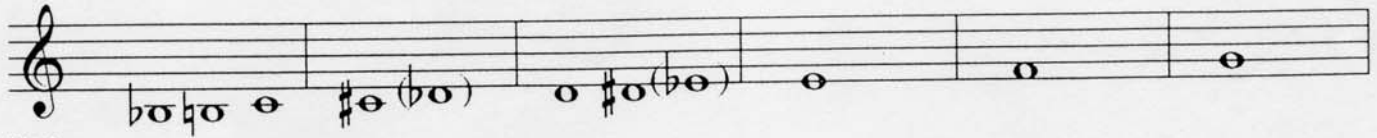


Pitch Tendencies & Adjustments

Oboe

S = Sharp
F = Flat
V = Very

(Notes not addressed are generally acceptable)



Pitch
Tendency

F

VF

F

S

F

S

S

Adjustment

Use RP3
More reed
in mouth

More reed & air
Firm embouchure

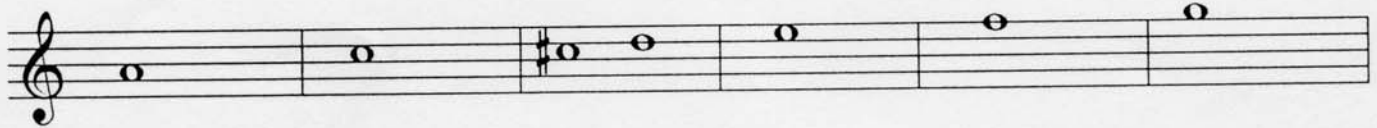
More reed & air
Firm embouchure

Add low
R3 key

Regular
fingering

R1/R3
RP3

Less reed
Add R3 or RP1



S

VS

S

S

F

S

S

Add R3 & RP1

Use less reed
Add RP1 or
R1, R2 & R3

Less reed

Add LP2 or
Low Bb key if
available

Add RP3

Use
R1 & R3
only

Add LP2



F

F

VF

VS

F

S

Use more reed
Add adjusting key
Such as LP1
Experiment

Use more reed
Add adjusting
key - experiment

Use more reed
Add adjusting
key - experiment

Add LP2

Multiple fingerings Available
depending on instrument
Experiment