

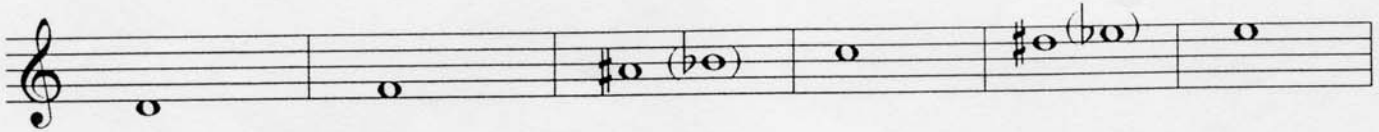
# Pitch Tendencies & Adjustments

## Tenor Saxophone

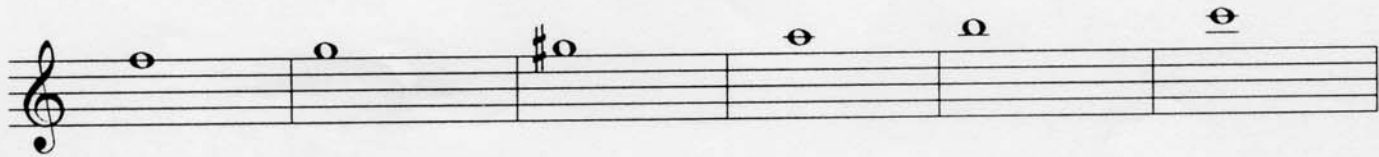
F = Flat  
S = Sharp  
V = Very

*Note: Finger Adjustments will tend to cause timbre changes*

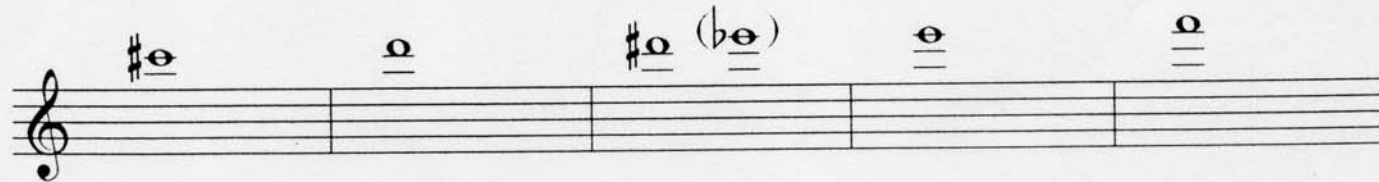
(Notes not addressed are generally acceptable)



Pitch Tendency	F	F	F	S	S	VS
Adjustment	None	Add RP1	Use LP1	Use 4, 5, 6	Use 4, 5, 6	Use LP4



Pitch Tendency	S	VS	S	S	S	VVS
Adjustment	Use RP2	Use RP2	Use RP2 and LP4	Use 6	None	Use 4, 5, 6



Pitch Tendency	VVS	VS	VS	VVS	VS
Adjustment	Use 4 & 6	Use 4, 5, 6	Close LS2	Close LS2 or Use RP1	Close LS1